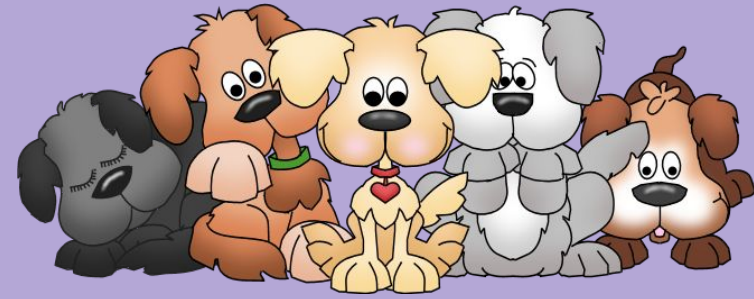




March 18th - 22nd



MATH

- ★ We will compare Fractions.
- ★ We will identify patterns and complete patterns.
- ★ We will convert Improper Fractions and Mixed Numbers.

Vocabulary to Know:

- | | |
|-----------------------|-------------------|
| 1.numerator | 7.Unlike Fraction |
| 2.denominator | 8.Like Fraction |
| 3.equivalent | 9.LCD |
| 4.benchmark fraction | |
| 5.equivalent fraction | |
| 6.unit fraction | |

Google Apps

- ★ We will use Google Apps to review previously learned skills in all subject areas.

IMPORTANT REMINDERS:

- ★ Please continue to check the Daily Folder and Planner for important information !
- ★ Early Dismissal Wednesday, March 27th - 12:30 🐰
- ★ School resumes on Tuesday, April 2nd 🐣

Mrs. Wilson's LESSON PLANS

Week of March 18th - 22nd

Lesson Plans are Subject to Change



	MONDAY March 18th 6 C	TUESDAY March 19th 1 A	WEDNESDAY March 20th 2 B	THURSDAY March 21st 3 C	FRIDAY March 22nd 4 A
MATH	<p>O:TSWBAT -Compare Unlike Fractions -Use LCD to Compare</p> <p>A: ★ Mad Minutes ★ POTD ★ Find an LCD to Compare Unlike Fractions</p> <p>E: student responses</p>	<p>O:TSWBAT -Compare Unlike Fractions -Use LCD to Compare</p> <p>A: ★ Mad Minutes ★ POTD ★ Find an LCD to Compare Unlike Fractions ★ Compare with Butterfly</p> <p>E: student responses</p>	<p>O:TSWBAT -Compare Unlike Fractions -Use LCD to Compare</p> <p>A: ★ Mad Minutes ★ POTD ★ Compare Unlike Fractions word problem</p> <p>E: student responses</p>	<p>O:TSWBAT -Add Like Fractions</p> <p>A: ★ Mad Minutes ★ POTD ★ Add Like Fractions notes</p> <p>E: student responses</p>	<p>O:TSWBAT -Add Like Fractions</p> <p>A: ★ Mad Minutes ★ POTD ★ Add Like Fractions</p> <p>E: student responses</p>
Extra/Google Apps	<p>O:TSWBAT -gain understanding of Google Apps. -Identify patterns -Reduce fractions to simplest form</p> <p>A: ★ Patterns ★ Simplest Form</p> <p>E: student responses</p>	<p>O:TSWBAT -gain understanding of Google Apps. -Identify patterns -Reduce fractions to simplest form</p> <p>A: ★ Patterns ★ Simplest Form</p> <p>E: student responses</p>	<p>O:TSWBAT -gain understanding of Google Apps. -Convert Improper Fractions & Mixed Numbers</p> <p>A: ★ Patterns ★ Improper Fractions notes</p> <p>E: student responses</p>	<p>O:TSWBAT -gain understanding of Google Apps. -Convert Improper Fractions & Mixed Numbers</p> <p>A: ★ Patterns ★ Improper Fractions notes</p> <p>E: student responses</p>	<p>O:TSWBAT -gain understanding of Google Apps. -Convert Improper Fractions & Mixed Numbers</p> <p>A: ★ Patterns ★ Improper Fractions notes</p> <p>E: student responses</p>

*Lesson Plans meet requirements of the Rockwood Area School District Curriculum & PA State Standards for 4th Grade.

*Accommodations & Modifications included but not limited to: follow IEPs & GIEPS, differentiated instruction, preferential seating, opportunities for intervention or enrichment, & challenge activities at teacher's discretion.